

To Draeger Customers who use:
Plus Series and PSS Series Lung Demand Valve
(All Connection Types)

August 25, 2023

**Safety Notice: Plus Series and PSS Series Lung Demand Valve – Lever Adjusting Screw
(Internal Reference PR132893 / TSB-296)**

Dear Valued Dräger Sales Channel Partner,

Within Draeger's continuous quality monitoring and quality assurance processes, and in view of achieving our high standards of quality and the high standards that are expected of us by our customers, we are disclosing the following information.

ISSUE

Draeger Safety UK Ltd identified a small quantity of **Plus Series and PSS Series Lung Demand Valves (LDVs)** where the primary lever was found to drop out of the service setting specification.

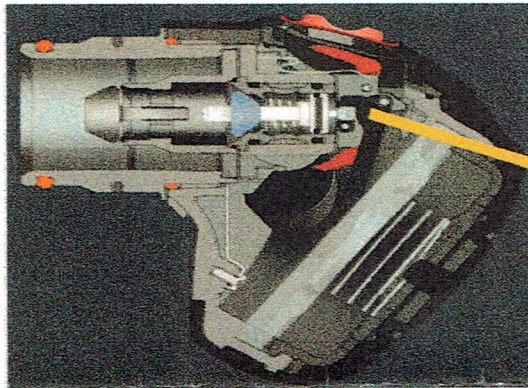
Comprehensive investigation of those devices determined that the secondary lever adjusting screw had become loose and was able to migrate and alter the primary lever height, thus affecting the LDV performance.

The service level requirement for the lever height is pre-defined and the potential screw migration can cause the lever to operate outside of the technical specifications. As the primary lever position drops, should such drop be beyond the lower service setting specification, the air flow from the LDV will gradually decrease. The worst-case failure would be a significant reduction or a full loss of the air supply.

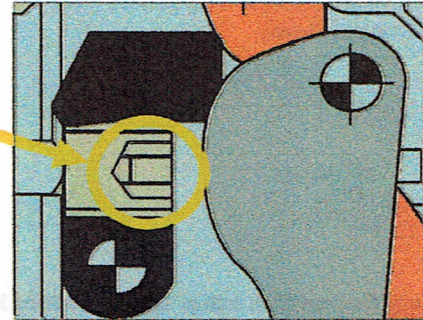
To date, Draeger has not been made aware of any reports of injuries related to this failure.

As a valued Draeger Channel Partner, we are requiring your cooperation as outlined in Section 16 (Recall) of your Channel Partner Agreement.

- ***If the affected devices were purchased to your stock, please assist us with the final destination contact information of these devices.***
- ***If the affected devices were shipped to the end user by Draeger, we will take the responsibility to contact the end user but may need further assistance from you.***



1. Lung Demand Valve



2. Secondary Lever Adjusting Screw

REQUIRED ACTIONS

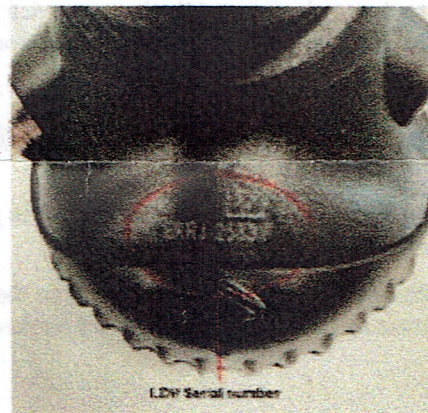
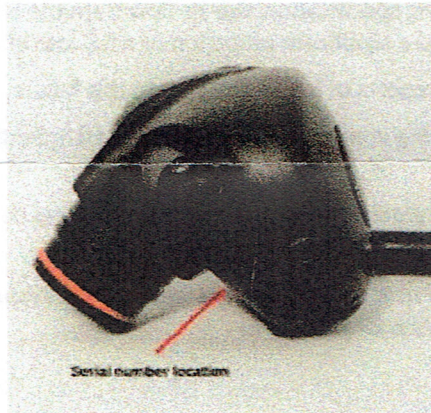
Dräger requires all LDVs within the affected serial number range (see below) to be removed from service immediately.

Please contact **Carter Brookshire, Indirect Services Manager** at the contact information provided at the end of this notification to arrange for the direct replacement of the LDV or the repair and service of your devices. Replacement or repair/service will be dependent on the specific product and material number you have.

Affected Lung Demand Valve (LDV) serial number range:

BRRF-6953 (First manufactured on 22nd June 2022) – **BRRM-9999**

BTRF-0001 – **BTRM- 0964** (Last manufactured on 29th November 2022)



Please see the attached for a list of affected devices that, according to our records, have been shipped to you.