

**Inspection Notice**  
**V-TEC™ and V-EDGE™ Self-Retracting Lifelines**  
 July 2023  
 PLEASE READ NOW AND TAKE ACTION

**MSA Corporate Center**  
 1000 Cranberry Woods Drive  
 Cranberry Township, PA 16066  
 800.MSA.2222  
 www.MSAafety.com

**Dear MSA Fall Protection Customer,**

MSA is issuing this Inspection Notice to inform you of a one-time inspection procedure regarding your MSA V-TEC and V-EDGE SRLs that were manufactured prior to July, 2023.

MSA has received a field report of a limited number of MSA V-TEC and V-EDGE Self-Retracting Lifelines (SRLs) that were assembled with the lifeline terminated improperly inside the unit. When the line is extended out near the end of the SRL, a V-TEC or V-EDGE SRL without a properly terminated lifeline may not arrest a fall.

**MSA has not received any reports of injuries associated with this condition. However, we are requesting that you perform the inspection outlined in this notice.**

Our investigation has determined that the SRL model numbers listed below for manufacturing dates prior to July, 2023 are potentially affected.

**Table 1: Potentially Affected Model Numbers**

<b>Model Numbers</b>	<b>Material description</b>
10220238	V-TEC SRL, 10m, Big Carabiner At Top
62207-***	7 m CABLE SRL CONSTANT FORCE SPRING
63206-***	SRL Galv. Cable, V-TEC 6m/20ft
63210-***	SRL Galv. Cable, V-TEC 10m/33 ft
63215-***	SRL Galv. Cable, V-TEC 15m/50ft
63306-***	SRL Stainless Cable, V-TEC 6m/20ft
63310-***	SRL Stainless Cable, V-TEC 10m/33 ft
63315-***	SRL Stainless Cable, V-TEC 15m/50 ft
63406-***	SRL Cable, V-EDGE 6m/20 ft
63410-***	SRL Cable, V-EDGE 10m/33 ft
63415-***	SRL Cable, V-EDGE 15m/50 ft
UN-63206-00ACA	SRL, V-TEC, 20', GALV, 36CS, CSA
UN-63210-00ACA	SRL GALV CABLE, V-TEC 10m/ 30 ft
UN-63410-00ACA	SRL CABLE, V-EDGE 10m/ 30 ft
UN-63415-00ACA	SRL CABLE, V-EDGE 15m/ 50 ft

\*\*\*any variation beginning with this number is included

**MSA is advising all customers to confirm the proper assembly and termination of the lifeline for MSA V-TEC & V-EDGE SRLs for all model numbers listed in the above table that were manufactured prior to July, 2023.**

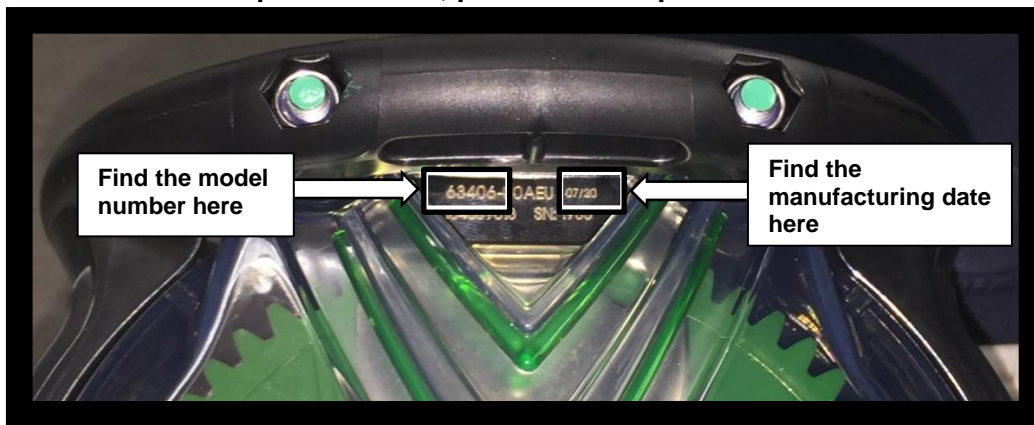
**Inspect all units per the instructions in this notice. Remove from service any SRL that does not pass the inspection.**

## Inspection Procedure

Perform the following inspection on your entire stock to determine if any of your SRLs need to be taken out of service.

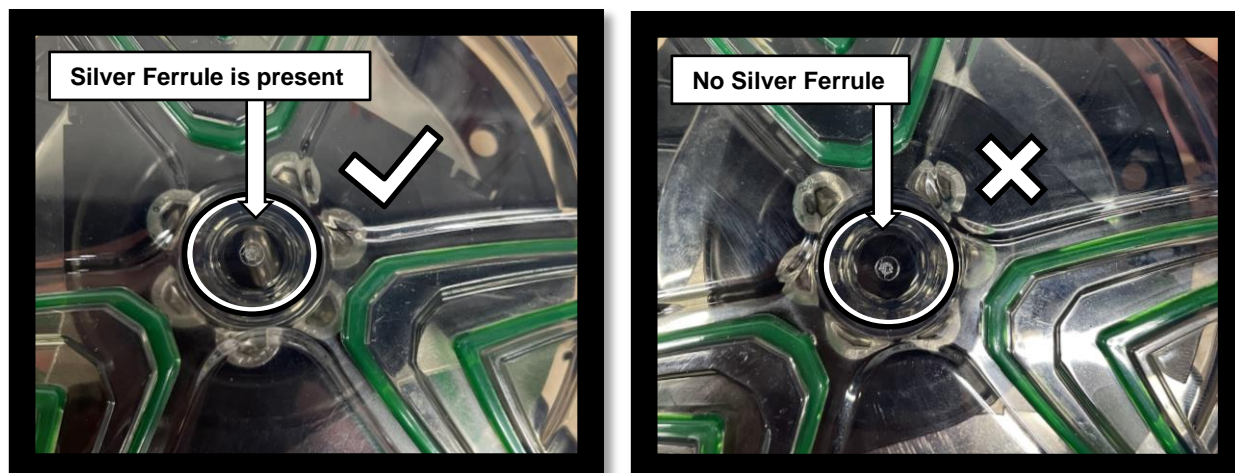
**MSA Corporate Center**  
1000 Cranberry Woods Drive  
Cranberry Township, PA 16066  
800.MSA.2222  
www.MSAafety.com

- 1) **Confirm Model Number** – Reference Figure 1 to locate the model number of the unit.
  - a. If your SRL is not found in table 1, no further action is needed.
  - b. **If your SRL is found in table 1, proceed to step 2.**
- 2) **Confirm Manufacturing Date** - Reference Figure 1 to locate the manufacturing date of the unit.
  - a. If the date is after 07/23, no further action is needed.
  - b. **If the date is prior to 07/23, proceed to step 3.**



**Figure 1: Locating your PN**

- 3) **Inspect the product** - Visually inspect the center of the unit for the presence of the silver ferrule in the central window of the housing as shown in Fig. 2.
  - a. If the silver ferrule is present (left side) – no further action is needed
  - b. **If the silver ferrule is not present (right side) – remove the product from service and contact MSA for replacement free of charge, as detailed below.**



**Figure 2 – Visual Inspection for Ferrule**

## **Replacing Affected V-TEC & V-EDGE SRLs**

We recognize that this is an inconvenience and, in an effort to minimize any disruption, we pledge to take any replacement actions as expeditiously as possible.

If you are in possession of V-TEC or V-EDGE SRLs that do not have proper lifeline termination, we will replace them free of charge.

**MSA Corporate Center**  
1000 Cranberry Woods Drive  
Cranberry Township, PA 16066  
800.MSA.2222  
www.MSAsafety.com

**To receive a replacement, please scan the QR code or visit our website at: [us.msasafety.com/user-notice-23018](https://us.msasafety.com/user-notice-23018) to complete the V-TEC and V-EDGE Replacement Form.** This will include your unit replacement and contact information. You may submit multiple forms if replacements for more than one model number are needed. Replacement SRLs will be shipped to you, and we will forward you instructions for returning the same quantity of affected SRLs.

Scan code or click the link:

[V-TEC and V-EDGE  
Replacement Form](https://us.msasafety.com/user-notice-23018)



### **MSA Customer Service Contact Information**

If you have any questions regarding this Inspection Notice please contact us as shown below:

#### **US and Canada:**

call 866-672-0005 or

Email us at [ProductSafetyNotices@msasafety.com](mailto:ProductSafetyNotices@msasafety.com)

#### **Europe, Middle East, and Africa:**

Email us at [ProductUserNotice@msasafety.com](mailto:ProductUserNotice@msasafety.com) or contact your local MSA customer service representative

#### **All other regions:**

Contact your local MSA customer service representative.

We apologize for any inconveniences that this may cause; however, your safety and continued satisfaction with our products is important to us.

Best regards,

Adam Troup  
Product Safety Manager